

# FAITH IN THE COMPANY



**PARTNERING**  
CHURCHES



**SUPPORTING**  
LEADERS



**ENGAGING**  
CHILDREN & YOUNG PEOPLE

[WWW.BOYS-BRIGADE.ORG.UK](http://WWW.BOYS-BRIGADE.ORG.UK)



**THE BOYS'**  
**BRIGADE**  
>the adventure begins here





## THE BOYS' BRIGADE - INTRODUCTION

Since 1883 The Boys' Brigade has reached out to millions of children and young people. Today we remain passionate about partnering with churches to build bridges into local communities and engage a generation of children and young people with a message of hope rooted in Jesus.

Through The Boys' Brigade, children and young people get involved in local churches by means of weekly groups,

residential, special events, community projects and training programmes. These activities are led by thousands of volunteers who are trained and supported to work as effective children's and youth workers in a Christian context. Whilst our work is in the UK and Ireland, we are a part of a worldwide organisation set up and run to reach over one million children and young people all over the world.



**THE BOYS' BRIGADE SEES THAT ITS PRIMARY OBJECTIVE IS TO ENSURE NO YOUNG PERSON WILL EVER LEAVE WITHOUT HAVING HEARD AND BEEN CHALLENGED BY THE GOSPEL OF JESUS CHRIST**



This booklet is produced to support the leadership of both the church and Company to consider together their shared role in mission. There are a number of questions raised and we hope you will look for opportunities to explore these as Company and church to strengthen your relationship and be more fruitful.

# WHY THE BOYS' BRIGADE FOR YOUR CHURCH?

When new BB work starts in a church there is a clear vision, purpose and commitment that sees the movement as integral to that church's mission outreach to the local community. We believe it is critical for the success of both church and Company to continually strengthen their relationship and work together for the kingdom. For many of our existing Companies that commitment between church and Company happened many years ago, often before present leaders became involved. As with any partnership it is important that we regularly review what we are seeking to achieve together.

Over recent years churches have experienced increasing difficulties getting young people through their doors and this trend is forecast to continue.

Yet each week The Boys' Brigade works with thousands of children and young people, and for many of them The Boys' Brigade is their only connection with the Church.

It does this by PARTNERING the church in outreach, SUPPORTING leaders and ENGAGING children and young people.

## Q HOW OLD IS YOUR COMPANY? DO YOU KNOW WHO STARTED IT AND WHY?

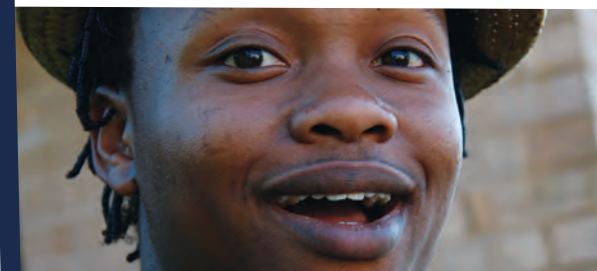
- Why might it be important to know these things?

## Q HOW FREQUENTLY DOES THE CHURCH AND COMPANY LEADERSHIP MEET TOGETHER TO DISCUSS THEIR SHARED MISSION?

- If this doesn't happen, how can such meetings be developed?

To strengthen and deepen this relationship it is vital to understand what The Boys' Brigade is and can be.

**// IN 1995, 613,000 10 TO 19 YEAR OLDS WERE ATTENDING CHURCH, BUT BY 2005 THIS FIGURE HAD DROPPED TO 230,000. THAT'S A DROP OF 62%. RECENT RESEARCH ALSO SHOWS THAT 59% OF CHURCHES HAVE NO ONE ATTENDING BETWEEN 15 AND 19 YEARS OF AGE**







# THE PARTNERSHIP



8 YEARS AGO A LAD WAS PLAYING FOOTBALL OUTSIDE THE CHURCH. HE CAME IN AND HAD A GREAT TIME. ABOUT 3 YEARS AGO HE GAVE HIS LIFE TO JESUS. SINCE THEN, HIS BROTHER AND HIS MUM HAVE BOTH COME INTO THE CHURCH AS WELL

Through partnership The Boys' Brigade can help the church reach out to children and young people in the local community, and we seek to be flexible to the needs of the local situation. The Boys' Brigade is a part of the church, and we hope that what happens when it meets will be central to its life and witness. The BB Company is an integral part of the church and as such BB leaders work on behalf of the church. It's really important that the church is involved in the selection process of BB leaders and that any guidelines that the church has for selection of volunteers are followed. Boys' Brigade is a bridge into the community and gives churches contact with many families they may not otherwise reach. Our experience tells us that if you get children and young people engaging in church activities, the rest of their family and friends could follow.

To ensure this is a real partnership the local church has clear responsibilities for its Company:

- 1 To determine suitable adults to be leaders in the Company.** This means that the church discerns who works in its name. The Boys' Brigade registers only those leaders that the church has nominated.
- 2 The Church appoints a Chaplain for the Company** This person, usually the minister, is a member of the Company staff and could be involved in staff meetings and supporting other leaders. We appreciate the time pressures on ministers and in those cases you may consider it more appropriate to appoint another suitable person to act as chaplain to the Company.
- 3 The programme of Christian education which the Company follows.** Material is provided by and recommended by The Boys' Brigade to help with the Spiritual development of children and young people, but ultimately the church determines the materials and methodology used.



**Q CONSIDER THE WAYS YOUR CHURCH AND COMPANY WORK IN PARTNERSHIP.**

**Q WHAT COULD YOUR ROLE BE IN DEVELOPING THIS PARTNERSHIP?**

We are stronger when we work together for the kingdom of God, and that's why the idea of partnership is really important to us.

**Q IN WHAT WAYS COULD THE PARTNERSHIP BE STRENGTHENED?**

- Could church members lead devotions, share a skill, pray regularly for the Company?
- How often is BB talked about and prayed for at the leadership level of church life?
- What avenues are open to communicate successes and concerns?
- Could the Company contribute in worship, promote church activities, regularly pray for the shared mission?

# SUPPORTING LEADERS



We pride ourselves on leaders who respect and value children and young people, and love them as individuals. We will do everything we can to help support and train volunteers to be effective Christian children's and youth workers. The church provides the leaders and The Boys' Brigade trains them, whether it's in managing volunteers, relational youth work, sharing their faith or leading residential. Providing a safe environment in which children & young people can develop is a fundamental responsibility for every individual leader, group, and church. Along with all denominations The Boys' Brigade has a comprehensive and well-respected child protection and safeguarding policy. All our leaders are required and assisted to complete a disclosure check. We provide a comprehensive range of insurances including public liability, employer's liability and personal accident cover. Boys' Brigade leaders are not alone! We have local and national support networks which means that they are never far from a friendly face, someone to pray, worship and share ideas with, and other groups to join in with activities and competitions.

BB leaders are very dedicated and enthusiastic and one aspect of the chaplain's role is to offer pastoral support to help the leaders balance their time and commitment between different aspects of their life and work for The Boys' Brigade and church.

**We read in Romans 12:7-9 . . .** "If your gift is serving others, serve them well. If you are a teacher, teach well. If your gift is to encourage others, be encouraging. If it is giving, give generously. If God has given you leadership ability, take the responsibility seriously. And if you have a gift for showing kindness to others, do it gladly. Don't just pretend to love others. Really love them."

Not every member of the church can be a BB leader, however all have a role to play in your group, whether it's through prayer, encouragement or supporting in other ways.

## **Q IN WHAT WAYS DO LEADERS FEEL EQUIPPED TO FULFIL THE TASKS THE CHURCH CALLS THEM TO DO?**

- Resources
- Training
- Mentoring / Discipling

## **Q WHAT SUPPORT IS AVAILABLE TO YOUR LEADERS BOTH LOCALLY AND NATIONALLY?**

- Church networks
- Boys' Brigade networks
- Other children's and youth organisations
- Local Council

## **Q WHAT KIND OF PASTORAL SUPPORT IS AVAILABLE OR NEEDS TO BE DEVELOPED?**



**I NEVER THOUGHT I COULD WORK WITH YOUNG PEOPLE, BUT THE TRAINING AND SUPPORT THE BB HAS PROVIDED AS GIVEN ME THE CONFIDENCE I NEED**



# ENGAGING CHILDREN & YOUNG PEOPLE



The Boys' Brigade firmly believes that to share the gospel we need to be in contact with children and young people. BB Companies can work in different ways depending on the needs of their church and local community. Companies can operate as Boys only Companies or work with the Girls' Association. There is also the opportunity to extend the age range to include young adults by operating an Amicus group. Our programmes cater for the varied interests of all children and young people. They are all aimed at having fun, but have a special focus on developing individual potential, getting involved in your community, providing opportunities to be listened to and have a say, exploring faith and recognising achievement.

Our four age related programmes contain important information about working with children and young people, as well as a wealth of ideas to keep your group fresh and most importantly enjoyable for children, young people and leaders. These contemporary programmes offer a firmly Christian-based means of working in a creative and relevant way using a balanced programme of adventure and activity. They are flexible enough to meet the needs of all churches.



**5-8  
YEARS**

At this age we seek to build firm foundations, establish a group identity and nurture responsibility. They do lots of different activities which include crafts, music, games, sports, making friends, prayer, and Bible stories.



**11-15  
YEARS**

It's all about young people learning new skills, making their own decisions and then achieving their personal goals. Activities range from: improving football skills, pod-casting, learning about their carbon footprint, the Bible according to the Simpsons, sportsmanship, and more.



**8-11  
YEARS**

Their fun-packed evenings are full of challenges, games and activities, usually ones that they have suggested themselves. We cater for just about every possible interest and at the same time support them to look beyond themselves.



**15-18  
YEARS**

It's all about young people planning and delivering their own programme. A wide range of topics focus on building life skills, encouraging recreation and leisure pursuits and being an active citizen. All of the programme provides opportunities for young people to explore a personal Christian faith. Now you can really begin to reap what has been sown and nurtured from the age of 5.

## NOW WHAT?

In addition to these age related programmes Boys' Brigade has produced faith development materials which are available at our website [www.boys-brigade.org.uk](http://www.boys-brigade.org.uk), which also signposts materials from other Christian agencies.

We read in 1 John 4:19 . . . "We love because he first loved us."

**THE WORK OF THE BOYS' BRIGADE IS RELATIONSHIP FOCUSED; WHAT WE DO IS OF LESS IMPORTANCE THAN THE RELATIONSHIPS WE FORM. IN A WORLD THAT DOESN'T SEEM TO BE VERY GOOD AT BUILDING RELATIONSHIPS, WE BELIEVE THAT WE HAVE A CRUCIAL ROLE TO PLAY HELPING YOUNG PEOPLE REALISE THEIR FULL WORTH AS THEY MATURE FROM CHILDHOOD TO ADULTHOOD.**

The Boys' Brigade wants to work with children and young people who often have no other connection with the church, and demonstrate to them the reality of a living God through what we do, say, and teach. Our programmes equip groups and leaders to engage children and young people in order to make a positive impact in their lives, and then form strong relationships through which our lives will speak even louder than words. Our hope is that children and young people will come to know Jesus for themselves.

- Q IN HOW MANY WAYS DOES YOUR CHURCH ENGAGE WITH CHILDREN AND YOUNG PEOPLE? ARE THERE OTHER CHILDREN AND YOUTH ACTIVITIES WITHIN YOUR CHURCH WITH WHICH THE COMPANY COULD ENGAGE?**
- Q HOW DOES YOUR CHURCH AND COMPANY REFLECT THE DIVERSITY OF YOUR LOCAL COMMUNITY?**
- Q HOW COULD YOU WORK TOGETHER TO REACH MORE YOUNG PEOPLE?**
- Q HOW DOES YOUR COMPANY PROVIDE OPPORTUNITIES FOR CHILDREN AND YOUNG PEOPLE TO ENGAGE WITH THE GOSPEL?**
- Q AS YOU REFLECT TOGETHER ON THE EFFECTIVENESS OF THIS WORK WHAT FURTHER SUPPORT DO YOU REQUIRE?**

The Boys' Brigade sees a real need to engage children and young people in the life of the Church: to be open to their ideas, value what they say, and allow them to express themselves in the way they want. We encourage leaders to listen and act on what children and young people say and involve them in decision making from the very beginning. As a result a key part of our leader recruitment strategy is to grow leaders from within groups. Underpinning all of our work is a steadfast belief that what Jesus said 2000 years ago is relevant today. Our leaders have experienced the truth that Jesus offers life in all its fullness. Consequently our passion is for children and young people . . . to experience acceptance and opportunities to develop skills and positive values. . . . to hear & see Jesus' hope for themselves. . . . and to become a practical demonstration of Jesus' love to their peers.

We hope that not only have you enjoyed reading and working through this booklet, but that it has also inspired you together, church and Company, to express your visions, hopes and dreams for shared ministry. We hope that you will explore ways of putting in to action some of these ideas and that through this more children and young people will come to know Jesus for themselves.





# THE BOYS' BRIGADE

>the adventure begins here



## WHAT SOME OF OUR LEADERS SAY

“ THE EFFECTIVENESS OF ANY YOUTH WORK IS DEPENDENT ON THE LEADERS ENGAGING WITH THE YOUNG PEOPLE. TO SPEND TIME WITH THEM, TO PRAY FOR THEM, TO ENJOY THEIR COMPANY, TO LAUGH AT WHAT MAKES THEM LAUGH, AND TO LISTEN TO WHAT THEY WANT TO TALK ABOUT. IT'S RELATIONSHIPS THAT ENGAGE YOUNG PEOPLE... ONLY THEN CAN WE SHOW THEM THAT LIVING FOR JESUS IS A REAL AND VITAL PART OF LIFE. ”

“ I WOULD SAY TO ANYONE CONSIDERING BECOMING A LEADER; GO FOR IT! I'VE NEVER REGRETTED A MINUTE. ”

## FOR MORE INFORMATION GET IN CONTACT

### THE BOYS' BRIGADE

Felden Lodge, Hemel Hempstead  
Herts, HP3 0BL

TEL 01442 231681

FAX 01442 235391

EMAIL [enquiries@boys-brigade.org.uk](mailto:enquiries@boys-brigade.org.uk)

YOU CAN VISIT OUR WEBSITE AT

[WWW.BOYS-BRIGADE.ORG.UK](http://WWW.BOYS-BRIGADE.ORG.UK)

THE BOYS BRIGADE is a Company limited b guarantee, registered in England & Wales number 145122  
A Registered Charity in England & Wales number 305969 and in Scotland number SC038016  
Registered Office: Felden Lodge, Hemel Hempstead, HP3 0BL

